

Celebrate Waveney & Blyth



MAY - OCTOBER 2017

 walk  write  dance  look  eat  create

hot design for print brand & web

the cut
halesworth
01986 834140
mustardcreative.com



Scarfe
Charitable
Foundation

THE
RAVENINGHAM
CENTRE



Welcome to another exciting programme of events that shine a light on the unique character and creativity of the Norfolk/Suffolk border.

Thanks must go to Arts Council England and the National Lottery for supporting this year's Sensing Nature project and to the Scarfe Charitable Foundation. We are also very grateful for the input of our partners Norfolk & Norwich Association for the Blind, the Raveningham Centre, the Ferini Art Gallery and Suffolk Poetry Society.

Details of all these events and more information about Waveney & Blyth Arts appear on our redesigned and screen-reader-friendly website – **www.waveneyandblytharts.com**

Nicky Stainton

Chair of W&BA



Cover image - Mirror Cube by Brian Korteling. Photo Andrew Atterwill

WHY NOT JOIN US?

If you like what you see here why not become a member?

All our activities are open to everyone but you can save money on events by joining, while, at the same time, supporting this volunteer-run organisation and becoming part of an active arts community.

See page 14 for details

BOOKING FOR ALL EVENTS

We have a centralised booking system which covers all events (unless stated otherwise) so that you can book for as many as you wish.

To book tickets or request more information about an event please email **bookings@waveneyandblytharts.com** with your requirements or queries, or call **07415 168806** and request a call back.

Payment methods and other information will be sent to you within five days.

NB Children and young people under 18 have free access to most of our events (except Family Fun Day), but please check when booking places.



SENSING NATURE Exploring sound in nature

SOUND TRAIL

Friday 30 June 5pm

Saturday 1 July 12pm, 2.30pm, 4.30pm

Venue: Thornham Woods, Hall Lane,
Thornham Magna, Eye, Suffolk IP23 8BX

Tickets: Adults £9

W&BA Members £8

Visually impaired people £7

Sighted guides & under 18s free



Jackie Walduck



Adrian Lee

Over three months singers and instrumentalists from Norfolk and Suffolk have created an original music score inspired by the calls of birds, insects and wildlife found on the wonderful mixed woodland site. They have been led by highly-acclaimed composer/musicians Jackie Walduck and Adrian Lee and will be joined by other members of their London-based ensemble of sighted and visually impaired professional musicians, Tactile.

Tactile is :

Jackie Walduck - vibraphone

Adrian Lee - guitar

Matthew Wadsworth - lute and theorbo

James Risdon - recorders

Tom Jackson - clarinet and saxophone

Ben Markland - double bass

The project has been developed with Norfolk & Norwich Association for the Blind.



"This is a fantastic, innovative project, and I am so excited that everyone will now have the opportunity to participate and experience nature in new ways." **Tom Shakespeare**, commentator, broadcaster and campaigner and Sensing Nature Patron

How does your sense of place change when you can hear, but not see, your surroundings? How do blind and visually impaired musicians interpret the sounds of insects, birds, bats and other animals? What sonic magic can musicians weave in a beautiful woodland setting?

Come and find out by sensing nature through your ears on a unique musical journey performed live by local musicians and Tactile, a ground-breaking ensemble of world class musicians. Audiences will be led along wheelchair-friendly paths to listen to newly-composed music mingling with real sounds of nature. Sighted audience members may wear blindfolds, if desired.

Each performance lasts approx 50 minutes.

Places are limited so booking and payment in advance are essential. Parking, access and other information supplied on booking. To find out more or buy tickets email Katie at bookings@waveneyandblytharts.com or call 07415 168806.



Supported using public funding by
**ARTS COUNCIL
ENGLAND**



Thornham Walks



Waveney Valley Sculpture Trail @ Raveningham

Friday 18 August – Sunday 17 September

Open every day 10am – 5pm

Venue: The Raveningham Centre, Beccles Road, Raveningham, Norfolk NR14 6NU

Entry £5

(£4 members of Waveney & Blyth Arts), under 18s free. Pay on entry only.

This year the hugely-popular Sculpture Trail takes up residence in the fascinating new setting of the Raveningham Centre.

Three acres of lawns, shrubberies and orchard are set around Tudor buildings which house a range of intriguing artisan businesses and a café.

The Trail, which drew over 3,000 visitors last year to its previous site at Earsham, features site-specific

work, 3-D constructions and sculpture by more than 40 Norfolk and Suffolk artists. It is curated by Sarah Cannell.

An audio-guide is available on payment of a returnable deposit.

Parking: plentiful free parking and designated disabled parking.



Toilets: including a wheelchair accessible toilet and nappy changing facilities.



Clare Hamburger

Ravenous Café

The café will be open from 10am to 5pm every day for drinks, light lunches, teas, cakes, and other home-made refreshments.

ADDITIONAL ACTIVITIES ON SITE



Curator's Guided Walk

Monday 21 August 10am – 12pm

Cost £10/£8 W&BA members (includes entry)



Come for a greater insight into the works on display and the artists who have contributed to our trail, in the company of this year's curator Sarah Cannell.



Vanessa Pooley



Curator's Guided Walk + BSL Interpreter



Monday 21 August 1.30 pm – 3.30pm
Cost: £10/£8 W&BA (includes entry fee)



As above, for British Sign Language speakers, in conjunction with Deaf Connexions [deafconnexions](http://deafconnexions.org.uk)

Family Fun Day

Wednesday 23 August 12pm – 4.30pm

Cost Adult entry (£5/£4) + £4 per child

Drop-in children's outdoor art workshops, including make your own charcoal, wild drawing, sculpting with clay, crochet and weaving. All children must be accompanied by a parent or carer.

No booking required – pay on the day.



Herb Walks

Saturday 26 August & 9 September

Cost £10/£8 W&BA member
(includes entry and cup of tea)



Nathalie Chidley is a qualified herbalist who lives and practises in Beccles. She will lead two walks around the Sculpture Trail introducing and explaining the uses of all the medicinal plants around the site.

www.starcraftandleechdom.co.uk

Tickets contact Nathalie on **07961 461359**

See also:

Sarah Cannell Landscape Painting - page 9
Photography on the Sculpture Trail - page 10
Discovering the Sculpture Trail through Line and Movement - page 10



Harleston & Waveney Art Trail Collective

Friday 18 August – Sunday 17 September
Open every day 10am – 5pm

Venue The Ravenous Café, Raveningham Centre, Beccles Road, Raveningham, Norfolk NR14 6NU

Entry Free



Mary Spicer



In the Ravenous Café Harleston & Waveney Art Trail Collective will exhibit new paintings, textiles, prints and 3-D work inspired by the light, colour and forms of the Waveney Valley.

All the artists live and work around Harleston and Bungay. All artwork on display, as well as cards, prints and unframed items, will be for sale. See www.hwat.org.uk

Walks Here But Out Of Sight



Adrian Bell's Redisham – Writing from Wartime Farms

Sunday 9 July 2pm – 5pm

Cost £6/£5 W&BA members + £4.50 per person entrance fee to Redisham Hall



To coincide with Redisham Hall Open Gardens Chris Reeve and



Ivan Crane will guide walkers from the Hall to Suffolk's smallest church. We will hear tales of writer and countryman Adrian Bell, and Land Army veteran Angela Ottaway reading her own poems and those by other Land girls, some of whom were based on Bell's farm. There will be stories of conscientious objectors who worked the land. Learn how the Bloomsbury Set connects them all. In association with Suffolk Poetry Society.

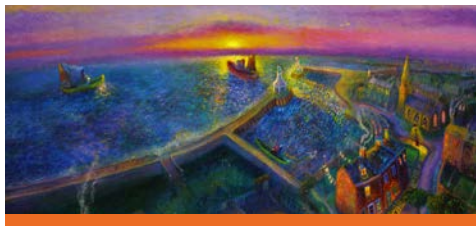
Meet at: Redisham Hall Open Day car park, Nr Beccles, NR34 8LZ

Distance 5 miles (approx). Tea and cake for sale at the Hall at the end.

Within Our Midst – Lowestoft's Hidden Art History

Friday 21 July 1pm – 4pm

Cost £6/£5 W&BA members



This linear town walk reveals the overlooked street art that Lowestoft



visitors and residents take for granted. It delves into lost artistic businesses, such as East Anglia's only porcelain factory and the still thriving artists' brush factory. We'll learn more about the town's theatrical heritage and visit artist Mark Burrell's studio to view his dream-like paintings of the town's now lost beach village.

Meet at: Suffolk Records Office, upstairs in Lowestoft Central Library, Clapham Road South, Lowestoft NR32 1DR

Short town walk. Allow 3-4 hours duration when paying for car parks. Tea and cake at a vintage tea room in the historic High Street included in price.

Shifting Sands & Fine Finds – Covehithe

Saturday 22 July 12.30pm – 4pm

Cost £6/£5 W&BA members



A leisurely 'there and back' walk, at low tide, along the rapidly eroding coast at



Covehithe with local beachcomber Simon Raven. Bring a bag to collect evidence of past wrecks, fossils, flints, amber and sea-glass, as well as sea-washed tree roots, old defences and more recent man-made detritus. Simon will bring examples of past finds including photos of boat-wrecks, fossilised bark and amber. We'll display our discoveries and may create a sculptural piece to leave for others to find.

Meet at: St Andrew's Church, Covehithe NR34 7JJ. Parking along the side of the road before reaching the church.

Bring your own picnic lunch (no refreshments available) and swimwear if so inclined.

Walks Here But Out Of Sight



Stories of the Otter – Observing the Invisible

Saturday 29 July 10.30am – 12.30pm
Cost £6/£5 W&BA members



Otters are elusive creatures and rarely seen. On this walk citizen scientist, local resident and



artist Meg Amsden will guide us along the sea wall to the John Minihane hide. Stopping at places where otters may have left their tracks and traces, we will immerse ourselves in otter country. Writer Melinda Appleby will read otter poems and Meg will tell otter stories, talk otter science, and ask for stories from the participants.

2 – 2 ½ hours with lots of stops.

Meet at: Suffolk Wildlife Trust's Hen Reedbeds Reserve car park, off A1095 Halesworth Road, Southwold, IP18 6SH

Distance 3 miles (approx)

Follow the Rails – Blythburgh to Southwold

Tuesday 1 August 2pm – 4.30 pm + return bus journey on the Anglia 88a **Cost** £6/£5
W&BA members (under 12s free) + bus fare



Rediscover what remains of the famous Southwold Railway narrow gauge line in the company of a local expert. Is it true the train was so slow you could gather flowers while it was still moving? Where was Blythburgh Station? How were building challenges overcome? What remains of Walberswick Station? What is the China connection? And what about the railway's future preservation? All will be revealed and we'll hear original anecdotes and poems from local poets (courtesy of the Suffolk Poetry Society) in celebration of the railway.

Meet at: Holy Trinity Church car park, Blythburgh IP19 9LP

Distance 3.5 miles (approx). No refreshments but cafés in Southwold at the end of the walk.

Women War Photographers

Sunday 20 August 2.30 – 4.30pm
Cost £6/£5 W&BA members



Not so much a walk as a listen and look around



this fascinating treasure trove of military and personal artefacts, stories and mementos connected to the 8th US Army Air Force. Hear about two extraordinary women photo-journalists - Margaret Bourke-White, America's first accredited woman war photographer, and Lee Miller, who documented activities on the home front and for the American Army in Europe. Look around the collection and share reflections at the end. Keen cyclists can meet in Budgens' car park, Harleston at 2pm and cycle the 5 miles to Thorpe Abbots, as so many servicemen did when cars were rare.

Meet at: 100th Bomb Group Memorial Museum, Common Road, Thorpe Abbots, Dickleburgh IP21 4PH
Refreshments available in the café.

Walks Here But Out Of Sight



Going Green – Connecting to Nature at Ringsfield Hall

Sunday 3 September 2pm – 5pm

Cost £6/£5 W&BA members



We start our walk at Ringsfield Church and continue along a track through farmed countryside



to Ringsfield Hall Eco Activity Centre. Here we re-awaken our senses on a meandering earth walk experience - meet a tree using all your senses; use a special mirror to create an eye in the sky and navigate your way through the magical grounds. You can make a cyanotype (sun picture) using light sensitive paper and then enjoy foraged teas and delicious homemade cake around an outdoor fire.

Meet at: Ringsfield church car park, opposite church. NR34 8JZ.

Distance 2.5 miles (approx). This walk involves active participation – suitable for families/children. Tea and cake included.

Hidden Worlds Sketchbook Walk

Thursday 7 September 10am – 2pm

Cost £6/£5 W&BA members



Sketchbooks in hand we will walk through the fantastically varied habitats of Walberswick



Nature Reserve. Moving from the boardwalk through woodland and into the reed beds this walk, led by artist Kasia Posen, will give you the opportunity to be absorbed into the mysterious worlds under upturned trees, in pools of water, and through the curious corridors of the reed beds. Paper, drawing boards and drawing tools will be provided. Please bring a packed lunch, a keen eye and your imagination.

Meet at: Hinton Five Cross Ways Car Park (on the B1125 between Blythburgh and Westleton) IP19 9FN.

Distance 4 miles (approx). No refreshments.

Writing on the Wall: Westhall's Medieval Graffiti

Saturday 16 September 2pm – 5pm

Cost £6/£5 W&BA members



This circular walk follows footpaths through the fields around Westhall exploring the land



use, both past and present. After two miles we reach the isolated location of St Andrew's Church where we will discover the lost voices of ordinary villagers scratched into the pale stone of walls and columns of the church. Medieval graffiti expert Pat May will help reveal these marks and explain their history and meaning. With refreshments available, we will have time to discover other secrets of the church.

Meet at: Westhall Village Hall IP19 8RG (IP19 8NU St Andrews Church).

Distance 4 miles (approx)



Unearthed – Writing from the Soil

Wednesday 5 July 10.30am – 3.30pm

Cost £15/£12 W&BA members



This workshop, led by landscape writer Melinda Appleby, will consider how poetry and prose can reflect the unearthing of nature and history and encourage you to try writing on this theme.

Following readings over coffee we will walk across the Thornham estate to search for evidence of soil burrowers – moles, rabbits, mining bees, earthworms – and then return for lunch and a short writing session.

Venue: Thornham Walks, Thornham Estate, Gislingham Road, Thornham Magna, near Eye IP23 8HH.

Teas and Coffees included. An optional booked sandwich lunch.



Writing the Labyrinth

Wednesday 19 July 10.30am – 3.30pm

Cost £15/£12 W&BA/SPS members



Walking the Labyrinth is a meditation. There are no tricks or dead ends; there is only one way in and one way out. The aim of the workshop is to inspire reflective poetry about the experience of the natural world or the symbolism of the journey inwards and outwards. Join poet Beth Soule to learn about and walk the labyrinth in the morning. After a few warm-up writing exercises, we will spend the afternoon recording the experience and crafting the beginnings of poetry. With Suffolk Poetry Society.

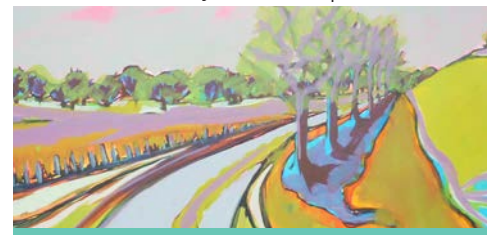
Venue: Thornham Walks classroom. Meet at Thornham Walks car park, Gislingham Road, Thornham Magna, near Eye IP23 8HH.

Teas and coffees included. Lunches available in Forge café or bring your own.

Landscape Painting Workshop with Sarah Cannell

Thursday 24 August 10am – 4pm

Cost £60/£55 W&BA members, includes art materials and entry fee to Sculpture Trail



An opportunity to enjoy the Waveney Valley Sculpture Trail and its

unique setting in this one-day workshop with acclaimed artist Sarah Cannell. Free up your drawing skills and learn how to capture the essence of place through line and bold colour. Suitable for all levels of experience. For further information contact sarah.cannell1@gmail.com

Venue: Waveney Valley Sculpture Trail, Raveningham Centre, Raveningham, Norfolk NR14 6NU.

Tea and coffee included, but bring your own lunch.



Creative Workshops



Photography on the Waveney Valley Sculpture Trail

Tuesday 29 August 10am – 3.30pm

Cost £15/£12 W&BA members, includes entry fee



Spend an inspiring day with like-minded photographers at the Sculpture Trail where there will be a chance to view the sculptures before photographing your favourites. Professional photographer Lucy Kayne will be on hand to offer guidance and technical advice.



The afternoon will be spent viewing and editing your work, followed by an informal group review session. Please bring your camera, a laptop and suitable outdoor clothing.

Venue: Waveney Valley Sculpture Trail at The Raveningham Centre, Raveningham NR14 6NU.

Lunches and drinks available from the Ravenous Café or bring your own.

Discovering the Sculpture Trail through Line and Movement

Wednesday 30 August 10am – 1pm

Cost £12/£10 W&BA members, includes entry fee



Mel Horwood and Mary Anne Woolf will lead a workshop that combines drawing and movement. Mel has a background in community and contemporary dance and film-making, and Mary Anne comes from a visual arts background. The aim of the workshop is to enjoy the site at Raveningham in a unique way, guided by artists from different art forms but with a common interest in creative responses to landscape. Suitable for anyone (adults and children 12 years+) regardless of previous training or experience as it will start with the basics of movement in space and on paper.

Venue: Waveney Valley Sculpture Trail at The Raveningham Centre, Raveningham NR14 6NU. Lunches and drinks available from the Ravenous Café or bring your own.

The Poetry of Crows

Wednesday 6 September 10am – 3.00pm

Cost £15/£12 W&BA/SPS members



Members of the crow family appear in the mythology of countless communities across the world, representing everything from death to creation.

Led by Beth Soule this workshop will explore both the natural history of the birds and the myths surrounding them and we will spend some time enjoying the exhibition, A Murder of Crows. We will share some of the poetry already written about the birds and then, after a few warm-up writing exercises, we will create our own poems or flash fiction on the subject. With Suffolk Poetry Society.

Venue: Ferini Art Gallery, 27 All Saints' Rd, Pakefield, Lowestoft NR33 0JL.

Teas and coffees included. Bring your own lunch.



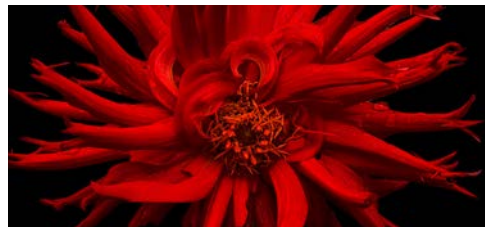
EXHIBITIONS

Discovering Micro Worlds through the Lens

Saturday 16 & Sunday 17 September

10.30am – 4.30pm

Cost Cost £60/£50 W&BA members



Discover hidden worlds when you zoom down through the close-up capability of your lens revealing tiny details and miniature landscapes. Photographer Jeremy Webb will demonstrate how to make the most of the close-up or macro setting on your digital camera. Further info from jrwebb@virginmedia.com Bring a digital camera with macro or close-up setting and cable connections for downloading via a USB port or card reader.



Venue: The Cut Arts Centre, New Cut, Halesworth IP19 8BY.

Lunches available at the Café (Saturday only) or bring your own lunch. Coffee/teas available.

Inspired By Becker Exhibition

Fri 4 August – Sun 6 August

10am – 5pm Friday & Saturday

10am – 4pm Sunday

Entry Free (donations welcome)



Over 130 works of exciting, contemporary fine art by members of Inspired By Becker



Art Society (IBBAS) and other East Anglian artists will be on show in the church. There is also a Paint Out Competition on Saturday 5 August.

In addition IBBAS has joined up with The Suffolk Punch Trust to offer children and adults an experience of painting 'en plein air', sketching the Suffolk Punch horse in ploughing finery, in May and June. Details www.ibbas.co.uk



Venue: St Peter's Church, Wenhamton IP19 9EG.

Tea, coffee and home-made cakes available.

A Murder Of Crows

Friday 1 September

– Sunday 24 September

Open: 11am – 4pm

Friday, Saturday, Sunday only

Entry Free



Waveney & Blyth Arts is very pleased to link with the Ferini Art Gallery to present an



exhibition of paintings, prints and sculptures on the theme of crows and other corvids. Artists include members of W&BA and other EA artists including Mark Ward, Ruth Wharrier, Kate Batchelor, Paul Lacey, Lucy Beevor, Sally James, Hatty Leith, and Chris Mound.

Venue: Ferini Art Gallery, 27-29 All Saints' Rd, Pakefield, Lowestoft NR33 0JL.

Discover Diss Delights

Wednesday 17 May 12.30 – 2.30pm

Cost £12 /£10 W&BA members



Come for a sociable light lunch and discover what the new look Diss



Corn Hall arts and heritage centre has to offer following its refurbishment as part of the town's £3.2 million Heritage Triangle project.

Speakers will provide the background to the project, the history of the building and the Heritage Triangle. Plus a tour of the building and new gallery.

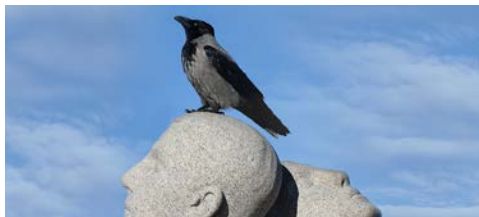
Fredrick's Fine Foods will provide coq au vin, butternut squash and chickpea tagine or pea and mint soup all served with sourdough or ciabatta roll, followed by walnut & chocolate brownie or carrot & pineapple cake. Special dietary needs catered for.

Venue: The Corn Hall, St Nicholas Street, Diss IP22 4LB.

A Chatter of Crows

Wednesday 20 September 12.30 – 2.30pm

Cost £12/£10 W&BA members



We have crows on the brain this year so where better for



another lunchtime gathering than the Ferini Art Gallery, venue for our Murder of Crows exhibition. View the exhibition, share a delicious lunch, find out all manner of facts and fictions that you never knew about corvids and hear the short-listed entries in our Poetry of Crows writing competition. Cast your (secret) vote for the overall winner who will be announced before the end and presented with their prize. A light lunch included in the price – details on booking. Special dietary needs catered for.

Venue: Ferini Art Gallery, 27-29 All Saints' Rd, Pakefield, Lowestoft NR33 0JL.

Writing Competition

The Poetry of Crows Writing Competition

Open until 12 September 2017

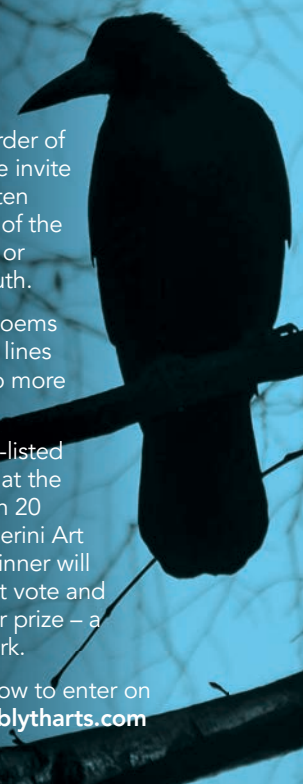
Cost: £3 per entry
or £5 for two

Inspired by our Murder of Crows exhibition we invite submissions of written work on the theme of the crow, whether rook or magpie, fable or truth.

Entries should be poems of no more than 30 lines or flash fiction of no more than 100 words.

The top three short-listed entries will be read at the Arts & Eats lunch on 20 September at the Ferini Art Gallery when the winner will be chosen by secret vote and presented with their prize – a crow themed artwork.

Full details about how to enter on www.waveneyandblytharts.com



Future Waveney & Blyth Arts Events



From strength to strength - let's celebrate!

Saturday 21 October 2.30 – 4.30pm

Cost £6/£5 W&BA members including refreshments



An enjoyable gathering in the lovely surroundings of Ringsfield Hall Eco



Activity Centre, near Beccles, for Waveney & Blyth Arts members and anyone who wants to find out more about the organisation.

There will be short illustrated talks about the highlights of the 2017 programme, news about plans and projects for 2018 and beyond, a live performance by the Sensing Nature musicians and singers, and a little bit of AGM business followed by tea and cakes.

Ringsfield Hall Eco Activity Centre is a beautiful venue for creative education about the environment set in the heart of the Waveney and Blyth valleys.

Venue: Ringsfield Hall, Hall Road, Beccles, Suffolk NR34 8JR.

Growing the Arts in an Age of Austerity

January 2018

A one-day conference for grassroots arts organisations, event organisers and creative entrepreneurs to gain insight into the East's Cultural Strategy 2016 – 2022 (Culture Drives Growth) at a time of uncertainty in both public and private sectors.

The aim will be to seize the initiative at grassroots level to promote shared resources, collaborative working and a positive strategic vision for the role of the local cultural sector in the Norfolk/Suffolk borderlands.



Keynote speakers and exemplars will be drawn from organisations with a role in developing cultural initiatives in our area such as the Local Authorities, New Anglia LEP concerning the Cultural Tourism Project, StartEast, New Cut Arts, INK Festival, and Waveney & Blyth Arts.

The day will focus on developing ways in which small organisations can maximise local expertise and collaborations.

Participants will explore ways in which local arts entrepreneurs and organisations can tap more effectively into the cultural enthusiasms of both resident and visitor populations. The experiences, views and responses of participants will drive the conference agenda and its outcomes.

Venue: The Cut Arts Centre, Halesworth

Inspired by Landscape

April 2018

An event for arts practitioners and landscape enthusiasts that will highlight landscape based, artist-led projects which encourage local communities to unlock the hidden heritage around them.

Talks, discussions and workshops will cover projects where creative work responds to location, such as Waveney & Blyth Arts' past projects. A proposed new project will explore

and celebrate the Waveney & Blyth river landscapes and reflect on the role of rivers in our lives. Examples from other organisations will also feature. The day will explore how we can encourage collaborations across artforms and across our area, and how we can make landscapes accessible to all, for all the senses.

Venue: to be confirmed.

For further information and news of all these events join W&BA, our free mailing list, follow us on Facebook or Twitter or visit www.waveneyandblytharts.com

From Halesworth to the Himalayas - A Legacy of Beauty

Saturday 1 July - Wednesday 19 July

Cost Free



Sir Joseph Dalton Hooker was an internationally renowned botanist, Director of the Royal Botanic Gardens, Kew, close friend and supporter of Charles Darwin, and one of the most successful British men of science. He was born in Halesworth on June 30th 1817 and to mark the bicentenary there will be exhibitions, trails, talks and events.

Students from the Chelsea School of Botanical Arts and members of Amicus Botanicus, the school alumni, will exhibit botanical paintings of plant species relating to and named after the famous botanist. www.halesworthgallery.co.uk

Venue: The Halesworth Gallery, Steeple End, Halesworth IP19 8LL.

Visit www.halesworthinbloom.com for details

ACCESS FOR EVERYONE

We want everyone to be able to enjoy our events and are striving to improve access for anyone with a disability.



Hearing aid users or people with hearing loss - a Williams Tour Guide system which links to special headsets and hearing loops is available on all our walks and workshops - let us know when you book if you would like to use this service.

British Sign Language speakers - a BSL interpreted walk around the Sculpture Trail led by the trail curator – see page 4.

Visually impaired and people with sight loss – large print and plain text versions of information are available. Our new website is accessible for screen reader technology. Trained volunteer guides are available for most events.



Wheelchair users – much of the Sculpture Trail site and many of our events are accessible – contact bookings@waveneyandblytharts.com or call **07415 168806** for details.

JOIN US!

Membership runs from 1 January to 31 December..... To join email membership@waveneyandblytharts.com or complete the form under JOIN US at www.waveneyandblytharts.com

WAVENEY & BLYTH ARTS celebrates and promotes the unique environment and creativity of this area.

All our events are open to everyone, but if you like what you see please join WAVENEY & BLYTH ARTS for just £15 and support this volunteer-run organisation.

Membership benefits:

- Reduced ticket prices for ALL W&BA events
- Information about and invitations to W&BA events
- The annual brochure of W&BA summer activities and walks mailed to you
- Weekly email update about our members' activities

- Weekly email update about funding, jobs and training in Norfolk and Suffolk
 - Attendance (optional) and voting at our Annual Meeting. If you are a creative practitioner or involved in an arts or environmental organisation you can also:
 - Promote your events, exhibitions and other activities through the weekly email update
 - Feature in our on-line Members' Directory with a link to your website (optional)
 - Receive information about upcoming W&BA projects that you could be involved in
- Organisations can be Associate Members and benefit from the above through a nominated representative. Cost £20pa.

SUE READ SHOES

*Ladies, Gents and
Children's Shoe specialist*

WIDE RANGE OF SHOE STYLES & BRANDS



*Fashion, Walking, Comfort & style
– We've got it all!*

16 The Thoroughfare, Harleston Tel: 01379 854332



4 London Road, Harleston Tel: 01379 853258

TWO SHOPS IN ONE!

Creative Living at the front with
everything for knitting and sewing and
Healthy Living at the rear with our
Healthfood Store.

— CURTAINS & BLINDS —

**Made to measure curtains and blinds.
100's of fabrics to choose from**

That's not all.... we also offer an in house
Clothing Alterations and Repairs Service,
Craft Classes and Dry Cleaning too.

Celebrate the WAVENEY & BLYTH

MAY - OCTOBER 2017

Wednesday 17 May PAGE 12

Arts & Eats –
Disscovering Diss Delights
Diss

Friday 30 June/

Saturday 1 July PAGE 3
Sensing Nature Sound Trail
Thornham Woods, Thornham Magna

Wednesday 5 July PAGE 9
Unearthed – Writing from the Soil
Thornham Woods, Thornham Magna

Sunday 9 July PAGE 6
Adrian Bell's Redisham –
Writing from Wartime Farms
Redisham, Beccles

Wednesday 19 July PAGE 9
Writing the Labrynth
Thornham Woods, Thornham Magna

Friday 21 July PAGE 6
Within Our Midst –
Lowestoft's Hidden Art History
Lowestoft

Saturday 22 July PAGE 6
Shifting Sands & Fine Finds
Covehithe

Saturday 29 July PAGE 7
Stories of the Otter –
Observing the Invisible
Southwold

Tuesday 1 August PAGE 7
Follow the Rails –
Blythburgh to Southwold
Blythburgh

Friday 4 – Sunday 6 August PAGE 11
Inspired by Becker Exhibition
Wenhaston

Friday 18 August –
Sunday 17 September PAGE 4
Waveney Valley Sculpture Trail
Raveningham

Sunday 20 August PAGE 7
Women War Photographers
Thope Abbotts

Monday 21 August PAGE 4
Curator's Guided Walk + BSL Version
Waveney Valley Sculpture Trail
Raveningham

Wednesday 23 August PAGE 5
Family Fun Day
Waveney Valley Sculpture Trail
Raveningham

Thursday 24 August PAGE 9
Sarah Cannell Painting Workshop
Waveney Valley Sculpture Trail
Raveningham

Saturday 26 August PAGE 5
Herb Walk
Waveney Valley Sculpture Trail
Raveningham

Tuesday 29 August PAGE 10
Photography on the Sculpture Trail
Raveningham

Wednesday 30 August PAGE 10
Line and Movement at the
Sculpture Trail
Raveningham

Friday 1 September –
Sunday 24 September PAGE 11
A Murder of Crows
Ferini Art Gallery, Pakefield

Sunday 3 September PAGE 8
Going Green –
Connecting to Nature
Ringsfield Hall

Wednesday 6 September PAGE 10
The Poetry of Crows –
Writing Workshop
Ferini Art Gallery, Pakefield

Thursday 7 September PAGE 8
Hidden Worlds Sketchbook Walk
Westleton

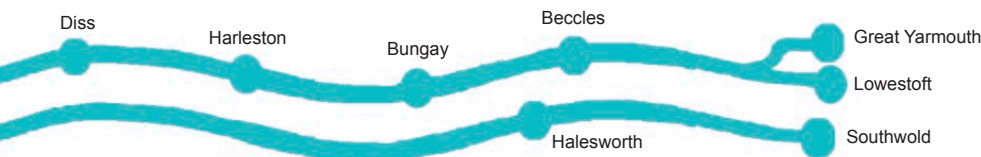
Saturday 9 September PAGE 5
Herb Walk
Waveney Valley Sculpture Trail
Raveningham

Saturday 16 September PAGE 8
Writing on the Wall –
Medieval Graffiti
Westhall

Saturday 16 &
Sunday 17 September PAGE 11
Discovering Micro Worlds
Through the Lens
Halesworth

Wednesday 20 September PAGE 12
Arts & Eats – A Chatter of Crows
Ferini Art Gallery, Pakefield

www.waveneyandblytharts.com



Waveney Valley

For information regarding our photographic contributions visit
www.waveneyandblytharts.com Waveney & Blyth Arts reserves the right to
change or cancel the advertised programme. Details are correct at time of going
to press and any changes will be posted on the website and advertised locally.