

WAVENEY & BLYTH ARTS



Celebrate

WAVENEY & BLYTH

May - October 2019



www.waveneyandblytharts.com



WELCOME

to a packed programme of events that shine a light on the unique character and creativity of the Norfolk/Suffolk border. We hope that you will find things familiar and new to delight you over the coming months. Please share your thoughts, comments and photos with us

🐦 @waveneyblyth

📘 @WaveneyBlythArts

📷 waveneyandblytharts

Go to www.waveneyandblytharts.com for full details about each event.

BOOKINGS

See inside back cover for details. Children and under-18s FREE at all events; those that are particularly suitable show Family Friendly Event icon.



Each event is numbered to help locate it on the map on pages 16 and 17.

Events marked* are associated activities organized by partners and requiring separate booking – see individual event information for details.

BUGS & BLOSSOMS POETRY COMPETITION

Bugs and blossoms are under threat – so feel inspired to respond poetically and contribute to W&BA's campaign to celebrate them and protect their future. First prize £100 cash, plus two runner-up prizes and an opportunity to read at the Lowestoft Seagull's New Words, Fresh Voices night on 17 November. Poet and author Dr Jos Smith (UEA) will select the winning entries. Closing date for submissions is 16 August 2019. Full details about prizes and how to enter on the website. £3 for one submission, £5 for maximum two.

Wednesday 14 August

*PAKEFIELD POSTCARD AUCTION IN AID OF W&BA

– Hotel Victoria, Kirkley Cliff Rd, Lowestoft NR33 0BZ

Doors open 6pm, auction 7pm

Not to be missed! The award-winning Pakefield Postcard Auction has selected W&BA's Bugs & Blossoms project to be the recipient of this year's auction proceeds. Over 100 artists have donated postcard-size original artwork to raise money for this important project. All the works can be viewed at www.pakefieldpostcardauction.co.uk in the weeks beforehand, and they will also be going on tour. Come and support W&BA and the generous artists.

£10.00 entry includes a bidding paddle, brochure, nibbles and glass of wine.



BUG HOTEL COMPETITION

Design and make your own Bug Hotel and share with us on W&BA's Bug Hotel Facebook page between 1 and 30 June. Watch @WaveneyBlythArts for more details.



BUGS & BLOSSOMS

Our native insects and plants are in catastrophic decline and we are losing the intricate mix of species that gives the natural world such richness. In response, W&BA is organising events to encourage people to notice, care and take positive action.



A weekend of events to launch the Bugs & Blossoms programme.

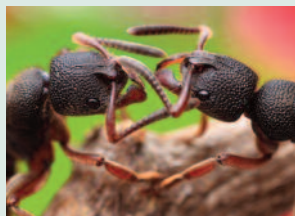
All events at Palgrave Community Centre, Rose Lane, Palgrave, Suffolk IP22 1AP unless stated otherwise. Refreshments available all day.

Nick Upton



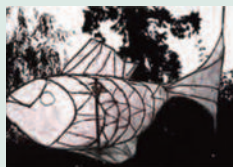
1 Friday 24 May MY LIFE BEHIND THE LENS: ILLUSTRATED TALK BY NICK UPTON 7.30-9pm

Multi-award-winning wildlife filmmaker and photographer Nick Upton has worked closely with Sir David Attenborough and BBC Natural World series, and won the British Wildlife Photography Awards (documentaries). He will be showing many stunning images from his work. £8 (W&BA members £6)



2 Saturday 25 May MACRO-PHOTOGRAPHY WORKSHOP 10am-5.30pm

BBC Wildlife photographer Nick Upton will lead a masterclass aimed at members of camera clubs and more experienced nature photographers. Limited places. £70 (W&BA members £65)



3 Sat 25 - Mon 27 May BUGS & BLOSSOMS EXHIBITION PALGRAVE

11-5pm every day
An exhibition of prints, paintings, crafts, cards and 3-D work by artists based in the upper Waveney valley including Jenny Goater, Maggie Campbell, Jane West, Deborah Vass and Kate Nockles.



4 Saturday 25 May MICROCOSMOS (1997) 7-9pm

Film footage of a dramatic, action-packed day in the life of a meadow and its tiny inhabitants, with stunning macro-photography using close-ups, slow motion and time-lapse photography. Directors: Nuridsany, Pérennou
Narrated by Kristin Scott Thomas
£6 (W&BA members £5)

For more information go to
www.waveneyandblytharts.com



5 Sunday 26 May WIRE SCULPTURE WORKSHOP WITH JENNY GOATER

10am-3pm
Create butterflies, bugs and dragonflies from a choice of wire or mesh netting; take your creations home. Adults and 10 years+. £20 (W&BA members £18)



6 Monday 27 May WILLOW SCULPTURE WORKSHOP WITH MAGGIE CAMPBELL

10am-3pm
Learn to create butterflies, bugs and dragonflies from woven willow; take your creations home. Adults and 10 years+. £20 (W&BA members £18)



7 Sunday 26 May WALK: BUGS AND BLOSSOMS AFTER ROGER DEAKIN

Meet at Mellis village hall IP23 8EB
10am-1pm
A guided walk around Mellis Common with readings from Deakin's books, focusing on his observations on plants and insects. Includes visit to the garden of Walnut Tree Farm. Limited places. £7 (W&BA members £5)



Nicholas Lingwood

8 Monday 27 May WALK: BUGGY HILLS AND BLOOMING OUTNEY, BUNGAY

Meet at Bigod's Castle, Bungay, NR35 1AR
2-5pm

Poet Nicholas Lingwood and writer Chris Reeve share readings that celebrate the local wildlife as they lead a 5-mile walk that circles the Waveney near Bungay, taking in Bath Hills and Outney Common. £6 (W&BA members £5)



9 Sunday 7 July MINI-BEAST FUN FOR THE FAMILY

Meet beside Ditchingham Village Hall, Loddon Road, Ditchingham NR35 2QN
2.30-4pm
Find your own real life bugs on Broome Heath and then make a mini-beast from natural materials, plus lots of free making activities afterwards - fun for all the family.

Supported by



Free/no booking



For more information go to
www.waveneyandblytharts.com

BUGS & BLOSSOMS

Nicholas Lingwood



10 Sunday 14 July

WALK: REDGRAVE & LOPHAM FEN - A SOURCE OF INSPIRATION

Meet at Redgrave & Lopham Fen, South Lopham, Diss IP22 2HX 2-4pm
Poet Nicholas Lingwood will read poems inspired by the abundant dragonflies, butterflies, Marsh Harriers and more as he leads this 3.5-mile walk around Redgrave and Lopham Fen reserve.
£6 (W&BA members £5)

Erwyn Smak



11 Thursday 25 July

HAIKU WORKSHOP INSPIRED BY NATURE

Lock's Inn, Lock's Lane, Geldeston, Beccles NR34 0HW 1-4pm
Join Tim Gardiner, prizewinning poet and ecologist, amidst the magical grazing marshes at Geldeston to stop, look, listen and write your own haiku poems. Includes walk and creative writing workshop.
£12 (W&BA members £10)



Ian Lindsay

12 Thursday 25 July

MIDSUMMER MOTHS WITH MARK COCKER

Lock's Inn, Lock's Lane, Geldeston, Beccles NR34 0HW 4.45-6.45pm
Learn about moths and butterflies of the Waveney valley with renowned naturalist and writer Mark Cocker. Includes a leisurely walk in the nearby woods, waterside and grazing marshes at Geldeston. Limited places.
£15 (W&BA members £12)



13 Sunday 4 August

RINGSFIELD MEADOW DISCOVERY DAY

Ringsfield Eco Centre, Hall Rd, Ringsfield, Beccles NR34 8JR 1-4pm
A magical afternoon of fun and discovery for all the family in the flower-strewn meadow at Ringsfield Hall. Activities include charcoal-making and drawing, cooking on the fire, live music from Iceni Rising, seed bombs, making bugs from clay, dressing up and more.
£10 per car



For more information go to
www.waveneyandblytharts.com

14 Tuesday 13 August

POETRY WORKSHOP - BUGS & BLOSSOMS

The Staithe Centre, Bungay NR35 1BF 10.30am-3.30pm
What flowers would you find in a witch's garden or a fairy story? How do bugs find their way into art, literature and stories? Explore how bugs and blossoms can inform and inspire poetry writing with Beth Soule and make 'poetry bugs' to hang in a Poet-Tree.
£15 (W&BA and SPS members £12)

15 Tuesday 17 September

LUNCHTIME ARTS & EATS - POETRY COMPETITION WINNERS

Ferini Art Gallery, 27-29 All Saints' Road, Pakefield, Lowestoft NR33 0JL 12.30-2.30pm
Browse the Pakefield Bugs & Blossoms exhibition, enjoy a sociable light lunch, listen to the shortlisted entries from the poetry writing competition and find out which Dr Jos Smith (UEA) has selected to win. Plus news of W&BA plans for 2020.
£12 (W&BA members £10) - includes light lunch, details on booking

ASSOCIATED EVENTS



Nicholas Lingwood

16 8 and 9 June

*WILDFLOWER OPEN MEADOW DAYS

Moat House, Green Street, Hoxne, IP21 5AZ 10am-4pm
Learn how to create a meadow for wildlife, and bask in the sights and sounds of the bugs and blossoms that live here. Tea and cake available. Limited parking so share transport if possible.
In association with
@summerinthemeadow
Free



Mark Ward

17 Friday 6 - Sunday 29 September

*BUGS & BLOSSOMS EXHIBITION PAKEFIELD

Ferini Art Gallery, 27-29 All Saints' Road, Pakefield, Lowestoft NR33 0JL 11am-4pm - Friday, Saturday, Sunday only
Exhibition of paintings, prints, sculptures and craftwork that celebrate the beauty and diversity of nature, including Kate Batchelor, Ruth Wharrier, Margaret Parsons, John R Carey and Mark Ward. Free.
www.feriniartgallery.co.uk



18 Thursday 26 September

*WILD WORDS DEBATE - BUGS AND FLOWERS

Guildhall, Norwich NR2 1JS 5.30-8pm
Presentations and discussion about our native insects and wildflowers - both threats and solutions. With Matt Shardlow, chief exec of Buglife, scientists from UEA, local poets and writers. Organised by Wild Anglia.
www.wildanglia.org/wild-words
Free



For more information go to
www.waveneyandblytharts.com

TWO RIVERS BOOK FESTIVAL 16 – 30 JUNE

"I am delighted to be involved with this exciting new annual event. The festival celebrates books by supporting and campaigning for independent bookshops and libraries. A major theme this year is how books get made and published."

Liz Calder, Festival Patron

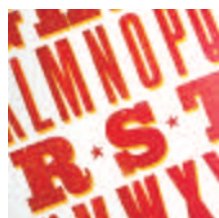


Connecting people and books along the Waveney and Blyth

19 Sunday 16 June

Festival launch HOW BOOKS GET PUBLISHED

The Stable at The Angel Hotel, Thoroughfare, Halesworth IP19 8AH 11am-12.30pm
Festival Patron Liz Calder (Booker Prize judge, co-founder of Bloomsbury Publishing), Dan Franklin (associate publisher, Jonathan Cape) and Lucy Hughes-Hallett (multi-award-winning author) discuss how books are chosen and edited for publication. Plus readings from Lucy's new collection of short stories, *Fabulous*.
£6 (W&BA members £5)



20 Tuesday 18 June

LETTERPRESS WORKSHOP

Harleston Library, Swan Lane, Harleston IP20 9AW 1-4pm
Create a book-related art poster or coaster using your imagination and letterpress blocks, with Edwin Mitchell-Finch of Bodgers Press.
£12 (W&BA members £10)

See the directory of local bookshops and libraries on www.waveneyandblytharts.com



21 Wednesday 19 June

BOOK-BINDING WORKSHOP

Barnabees Books, Yoxford Road, Westleton IP17 3AF 10am-1pm

Make a hard-cover notebook with expert bookbinder Helen Durrant. Tools and materials supplied. Also, advice on minor repairs to old books.
£12 (W&BA members £10)

CRAFTFULNESS



22 Wednesday 19 June

*CRAFTFULNESS: MEND YOURSELF BY MAKING THINGS

Halesworth Bookshop, 42 Thoroughfare, Halesworth IP19 8AR 7pm
Authors Rosemary Davidson and Arzu Tahsin will explain how to achieve calm and renewed energy through knitting, sewing, book-binding, potting or darning.
£4 from Halesworth Bookshop (01986 873840)



23 Saturday 22 June

WALK: FLOWER FAIRIES IN BUNGAY

Meet at St Mary's Church, Bungay NR35 1AX 11am-1pm

A walk around Bungay's historic sites inspired by the *Flower Fairies* books of Cicely Mary Barker. Historian and author Christopher Reeves will identify flowers featured in the books, read poems, and recount fairy folklore. Activities for children - fairy costumes welcome.
£6 (W&BA members £5)



24 Thursday 20 June

FOLDED BOOK ART WORKSHOP (24)

Stradbroke Library, Court House, Queens Street, Stradbroke IP21 5HG 1-4pm

Transform an unwanted book into a work of art through folding and cutting, with the Book Surgeon Michael Holton. Adults and children 8 years +
£12 (W&BA members £10)

For more information go to www.waveneyandblytharts.com



25 Saturday 22 June

*A GRUFFALO PARTY

Halesworth Bookshop, 42 Thoroughfare, Halesworth IP19 8AR 10:30am-12:30pm
Reading, crafts, fancy dress and face painting in this 20th anniversary celebration of Julia Donaldson's adored book, illustrated by Axel Scheffler.
Free event



26 Sunday 23 June

WALK: UNCOVERING DOGGERLAND - TIME SONG

Meet at Wood Farm Barn, Locks Lane, Benacre NR34 7LJ 10am-2pm
Experience the landscape of Doggerland, the land mass which once joined Britain to Europe, with Adam Burrows (Natural England) and Simon Raven (beachcomber). Julia Blackburn's new book *Time Song* will be the starting point to help uncover this lost landscape. (5 miles)
£6 (W&BA members £5)



TWO RIVERS BOOK FESTIVAL

27 Tuesday 25 June

HOW BOOKS GET MADE

The Cut, New Cut, Halesworth IP19 8BY
6.30-8pm

A fascinating investigation of why books look the way they do, with insights from book designer Will Webb and prolific book cover illustrator Jeffrey Fisher (*Captain Corellis Mandolin*). Chaired by Liz Calder.

£6 (W&BA members £5)
from 0300 303 3211 or email
boxoffice@newcut.org



28 Thursday 27 June

LETTERPRESS WORKSHOP

Halesworth Library, Bridge St,
Halesworth IP19 8AD
2-5pm

Create a book-related art poster or coaster using your imagination and letterpress blocks, with Edwin Mitchell-Finch of Bodgers Press.

£12 (W&BA members £10)



Henry Layte

29 Friday 28 June

CONNECTING BOOKS AND PEOPLE

Southwold Arts Centre, St Edmund's Hall, Cumberland Road, Southwold IP18 6JP
11am-12.30pm

Henry Layte (The Book Hive, Propolis Books), Emma Bacon (local writer and self-publisher), Abbie Clements (Halesworth Bookshop) and Philip Langeskov (UEA Creative Writing) discuss the decline of independent bookshops, the expansion of self-publishing, and how books get to us.

In association with **SOUTHWOLD ARTS FESTIVAL**
23RD JUNE - 30TH JUNE 2019

£7.50 from 01502 722572
or email boxoffice@se-arts.org

30 Saturday 29 June

FOLDED BOOK ART WORKSHOP

Beccles Library, Blyburgate, Beccles NR34 9TB
1.30-4.30pm

Transform an unwanted book into a work of art through folding and cutting, with the Book Surgeon Michael Holton. Adults and children 8 years +

£12 (W&BA members £10)

31 Saturday 29 & Sunday 30 June

*BLYTH SPIRIT - ALL THINGS BOOK AT THE LOW HOUSE

The Low House pub, Gorams Mill Lane, Laxfield IP13 8DW

A weekend of book-themed events to mark the end of the first festival. For details check out www.lowhouselaxfield.com



32 *THE BOOKSHOP

Screenings of the film based on Penelope Fitzgerald's novel about her time in Southwold.

Wednesday 19 June

The Cut, New Cut, Halesworth IP19 8BY
7.30pm

Tickets £6 from 0300 303 3211 or boxoffice@newcut.org

Friday 28 June

Electric Picture Palace, Blackmill Rd, Southwold IP18 6AN
7.15pm

Tickets from Electric Picture Palace 07815 769565

Throughout the festival, bookshops will be hosting book signings, literary quizzes and other events. Look out for details at the shops and on the Two Rivers section of our website.

For more information go to
www.waveneyandblytharts.com



TALKS & CREATIVE WORKSHOPS

42 Thursday 5 September

WOOLGATHERING - FROM FLEECES TO FLIGHTS OF FANCY

The Cut, New Cut, Halesworth IP19 8BY
10.30am-1pm

A glorious glut for textile fanatics - from the history of sheep farming in East Anglia to the yurts of Kyrgyzstan, from knitted gnomes to wearable-art, from historical talks to demonstrations, displays and even a woolly wearable-art fashion parade.

£10 (W&BA members £8) Book on 0300 303 3211 or box office@newcut.org



43 Thursday 7 November

RICHARD MABEY IN CONVERSATION + W&BA AGM

The Cut, New Cut, Halesworth IP19 8BY
7.30pm

Richard Mabey looks back over a lifetime's work with his new collection of essays, *Turning the Boat for Home*. Preceded by W&BA's Annual meeting for members at 6pm.

£10 (W&BA members £8) Book on 0300 303 3211 or box office@newcut.org

2 Saturday 25 May

MACRO-PHOTOGRAPHY WORKSHOP

see p4

5 Sunday 26 May

WIRE SCULPTURE WORKSHOP WITH JENNY GOATER

see p5

6 Monday 27 May

WILLOW SCULPTURE WORKSHOP WITH MAGGIE CAMPBELL

see p5

20 Tuesday 18 June

LETTERPRESS WORKSHOP AT HARLESTON

see p8

21 Wednesday 19 June

BOOK-BINDING WORKSHOP AT WESTLETON

see p8

22 Wednesday 19 June

*CRAFTFULNESS: MEND YOURSELF BY MAKING THINGS

see p8

24 Thursday 20 June

FOLDED BOOK ART WORKSHOP AT STRADBROKE

see p9

28 Thursday 27 June

LETTERPRESS WORKSHOP AT HALESWORTH

see p10

30 Saturday 29 June

FOLDED BOOK ART WORKSHOP AT BECCLES

see p10

11 Thursday 25 July

HAIKU WORKSHOP INSPIRED BY NATURE

see p6

12 Thursday 25 July

MIDSUMMER MOTHS WITH MARK COCKER

see p6

14 Tuesday 13 August

POETRY WORKSHOP - BUGS & BLOSSOMS

see p7

44 Tuesday 20 August

POETRY WORKSHOP - THEY TOIL NOT BUT THEY DO SPIN

The Bank Arts Centre, 2 Castle St, Eye IP23 7AN 10.30am-3.30pm

Beth Soule will explore the history, mythology and imagery of spinning and weaving - from spiders to silkworms and linen - which provides inspiration for poetry writing.

£15 (W&BA and SPS members £12)





Waveney Valley Sculpture Trail @ Raveningham

The Woven Woodland is a major outdoor art event for all the family featuring contemporary 3-D artwork in a rural setting. The sculpture trail runs for five weeks at the Raveningham Centre.

Christine Baxter



33 Friday 2 August - Sunday 8 September
Raveningham Centre, Beccles Road, Raveningham NR14 6NU
Open 10am-5pm every day
Tickets £6 (W&BA members £5).
Under 18s free. Pay on entry only



Three acres of lawns, orchard and intriguing outdoor spaces provide a magical setting for the Sculpture Trail, which this year explores the theme of The Woven Woodland. Curator Sarah Cannell has located site-specific installations, 3-D constructions and sculpture by over 30 artists from East Anglia and beyond, including Mark Goldsworthy, Andy Jarrett, Janette Lazell, Sarah Dyball, Tobias Ford, Bee Springwood, Mike Challis, and Rob Harries.

A pop-up gallery in the farmhouse shows prints, paintings, textiles and fragile pieces and there are large-scale textile works by Helen Howes in the **Ravenous Café**.

For more information go to
www.waveneyandblytharts.com



Janette Lazell

A mobility scooter will be available on a first come first served basis for a small donation. Or to ensure one is available when you want to visit contact Shaun Green of Norfolk Mobility Scooters on 01603 784474 to book a suitable model.

There is plentiful free parking and designated disabled parking.

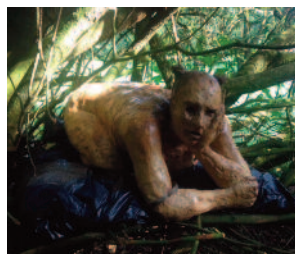
Gordon Senior



Toilets are wheelchair accessible and have nappy changing facilities.

Ravenous Café is open every day for light lunches, drinks, cakes, and home-made refreshments.

Rob Harries



For more information go to
www.waveneyandblytharts.com



34 Saturday 3 August **MUSIC INSPIRED BY BUGS & BLOSSOMS**

Waveney Valley Sculpture Trail @ Raveningham
6.30-8.30pm

The Sensing Nature Ensemble will perform songs and improvised pieces composed collaboratively by the group in response to the sounds and images of nature, and Janet Koralambe will lead singers from local choirs in songs from different cultures celebrating the natural world. Outside, or in the café if wet. **£6 (W&BA members £5)**

35 Wednesday 4 September **CURATOR'S GUIDED WALK**

10am-12.30pm

Gain a greater insight into the works on display and the artists who have contributed with Sculpture Trail curator Sarah Cannell. **£10 (W&BA members £8) includes entry to Sculpture Trail**

36 Wednesday 4 September **BSL CURATOR'S GUIDED WALK**

2-4.30
As above, for British Sign Language speakers with BSL interpreter.

£4 for BSL users and companions includes entry to Sculpture Trail

In conjunction with

deafconnexions



THEMED WALKS

7

Sunday 26 May

BUGS AND BLOSSOMS AFTER ROGER DEAKIN *see p5*

8

Monday 27 May

BUGGY HILLS AND BLOOMING OUTNEY, BUNGAY *see p5*

23

Saturday 22 June

FLOWER FAIRIES IN BUNGAY

see p9



26

Sunday 23 June

UNCOVERING DOGGERLAND AT BENACRE - *see p9*



9

Sunday 7 July

MINI-BEAST FUN AT BROOME HEATH *see p5*



10

Sunday 14 July

REDGRAVE FEN - A SOURCE OF INSPIRATION *see p6*



38

Thursday 25 July

IMAGINING THE BLYTH VALLEY TRAIL

Meet at Blythburgh Church Car Park, Church Lane, Blythburgh IP19 9LP 10am-4pm

Walk to Halesworth (7½ miles) along the route of a proposed heritage trail, in the company of Simon Raven and local 'experts'. Contribute your thoughts on what ought to be included in a trail leaflet covering history, heritage and ecology. Return by bus. £6 (W&BA members £5)



39

Friday 6 September

NATURE & HERITAGE SKETCHING WALK AT BURGH CASTLE

Meet at Burgh Castle car park, Butt Lane, Burgh Castle NR31 9QG 10am-12pm

Join artist Genevieve Rudd and a Broads Authority ecologist and historian to explore the churchyard of the Saxon church at Burgh Castle. Guided sketching inspired by the wild flora. All materials provided, no experience needed.

£7 (W&BA members £6)



40

Wednesday 11 September

WALBERSWICK SKETCHBOOK AND WILDLIFE WALK

Walk through the woods and reed beds with Kasia Posen 10am-2pm

Walk along the boardwalk and into the woods with Kasia Posen (artist) and Adam Burrows (Natural England). Find out about this intriguing habitat while sketching the fantastic environment.

£7 (W&BA members £6)

For more information go to
www.waveneyandblytharts.com



Neil Ebbott

41

Sunday 15 September

HOXNE - IN THE FOOTSTEPS OF ST EDMUND

Meet at St Edmunds village hall, Hoxne, Eye IP21 5AN 2-5pm

Hoxne, well known as the site of the martyrdom of St Edmund, has many other stories to tell including archaeological finds and a spectacular Roman hoard. Join Netta Swallow and poet Kaaren Whitney on a walk around the village and listen to Kaaren's evocative poem about the art of thatching. Pre-booking for walks is strongly advised as places are limited. To book and for further information about practical arrangements contact bookings@waveneyandblytharts.com £7 (W&BA members £6)



For more information go to
www.waveneyandblytharts.com



Annie Brandt

37

Thursday 22 -

Monday 26 August

***INSPIRED BY BECKER EXHIBITION**

Holy Trinity Church, Church Lane, Blythburgh IP19 9LP 10.30am-5.30pm

In its new venue and with an extended run, the Inspired By Becker Art Society (IBBAS) continues to celebrate the work of 20th century artist Harry Becker. Leading East Anglian artists respond to the power and immediacy of Becker's work in their own style to create exciting contemporary fine art. Also, a 2-day Paint Out competition and talk by the author Richard Hawking on his book *At the Field's Edge*. See www.ibbas.co.uk for details.

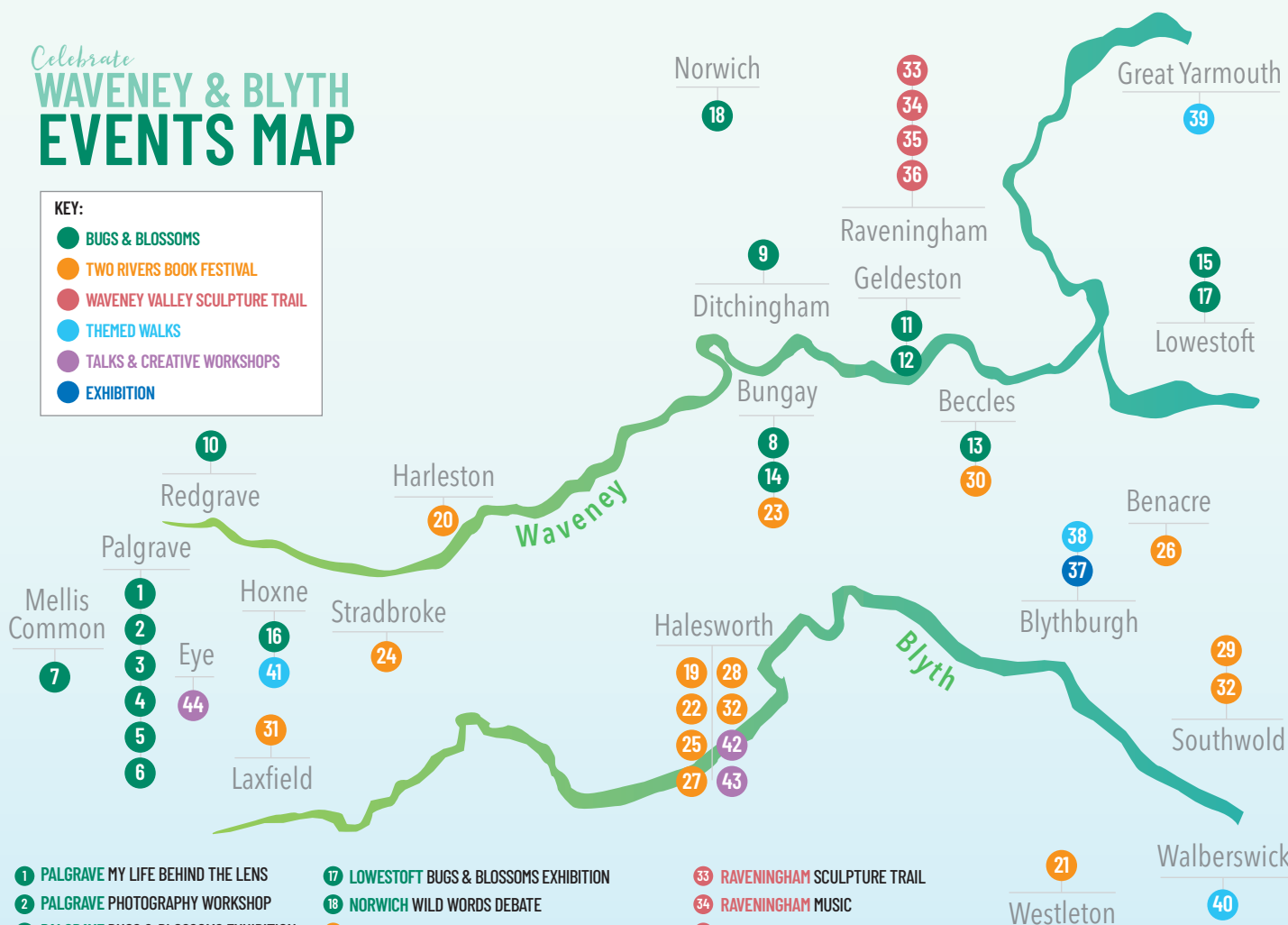
Free entry



Celebrate WAVENEY & BLYTH EVENTS MAP

KEY:

- BUGS & BLOSSOMS
- TWO RIVERS BOOK FESTIVAL
- WAVENEY VALLEY SCULPTURE TRAIL
- THEMED WALKS
- TALKS & CREATIVE WORKSHOPS
- EXHIBITION



- 1 PALGRAVE MY LIFE BEHIND THE LENS
- 2 PALGRAVE PHOTOGRAPHY WORKSHOP
- 3 PALGRAVE BUGS & BLOSSOMS EXHIBITION
- 4 PALGRAVE MICROCOSMOS
- 5 PALGRAVE WIRE SCULPTURE WORKSHOP
- 6 PALGRAVE WILLOW SCULPTURE WORKSHOP
- 7 MELLIS COMMON WALK
- 8 BUNGAY WALK
- 9 DITCHINGHAM MINI-BEAST FUN
- 10 REDGRAVE WALK
- 11 GELDESTON HAIKU WORKSHOP
- 12 GELDESTON MIDSUMMER MOTHS
- 13 BECCLES RINGSFIELD MEADOW DISCOVERY
- 14 BUNGAY POETRY WORKSHOP
- 15 LOWESTOFT LUNCHTIME ARTS & EATS
- 16 HOXNE WILDFLOWER OPEN MEADOW

- 17 LOWESTOFT BUGS & BLOSSOMS EXHIBITION
- 18 NORWICH WILD WORDS DEBATE
- 19 HALESWORTH HOW BOOKS GET PUBLISHED
- 20 HARLESTON LETTERPRESS WORKSHOP
- 21 WESTLETON BOOK-BINDING WORKSHOP
- 22 HALESWORTH CRAFTFULNESS
- 23 BUNGAY WALK
- 24 STRADBROKE BOOK ART WORKSHOP
- 25 HALESWORTH A GRUFFALO PARTY
- 26 BENACRE WALK
- 27 HALESWORTH HOW BOOKS GET MADE
- 28 HALESWORTH LETTERPRESS WORKSHOP
- 29 SOUTHWOLD BOOKS & PEOPLE
- 30 BECCLES FOLDED BOOK ART WORKSHOP
- 31 LAXFIELD BLYTH SPIRIT
- 32 HALESWORTH / SOUTHWOLD THE BOOKSHOP

- 33 RAVENINGHAM SCULPTURE TRAIL
- 34 RAVENINGHAM MUSIC
- 35 RAVENINGHAM CURATOR'S GUIDED WALK
- 36 RAVENINGHAM CURATOR'S GUIDED WALK
- 37 BLYTHBURGH EXHIBITION
- 38 BLYTHBURGH THEMED WALK
- 39 BURGH CASTLE THEMED WALK
- 40 WALBERSWICK THEMED WALK
- 41 HOXNE THEMED WALK
- 42 HALESWORTH WOOLGATHERING
- 43 HALESWORTH RICHARD MABEY
- 44 EYE POETRY WORKSHOP

HOW TO BOOK

Pre-booking for events is strongly advised as places, particularly on walks, are limited for safety reasons.

Unless otherwise stated, email bookings@waveneyandblytharts.com to book tickets or if you have any queries; or leave a message on **07415 168806** with your contact details.

Once your places have been confirmed you will be asked to pay, either by sending a cheque or paying online via your account.

Children and under 18s FREE at ALL events but please book their places so that we can keep track of numbers. They will need to be accompanied by a responsible adult.

FAMILY FRIENDLY EVENTS



Particularly suitable for children - and well-behaved dogs on leads, where appropriate.

ACCESS FOR EVERYONE

Large print and plain text versions of this brochure are available.



For hearing aid users or people with hearing loss, a Williams Tour Guide system, which links to special headsets and hearing loops, is available for all walks and workshops - inform us when you book.

British Sign Language speakers - see BSL version of Curator's Guide to Sculpture Trail (p 13).

The Sculpture Trail site and many of our events are accessible to wheelchair users.

For further information about accessing these activities email bookings@waveneyandblytharts.com

WHAT IS WAVENEY & BLYTH ARTS?

Waveney & Blyth Arts is a dynamic group that connects creative people and places in the Waveney and Blyth valleys on the Norfolk/Suffolk border. A wide variety of arts practice celebrates this special environment, and builds deep connections between people and places.

WHY NOT JOIN?

If you like what you see here why not become a member? All activities are open to everyone, but you can save money by joining - at the same time supporting the organisation and being part of an active arts community. Weekly e-newsletters deliver the latest arts news from the area, and you can promote your own creative activities too.

£15 (£20 for an organisation) for a year's membership (January to December). Go to www.waveneyandblytharts.com and click on JOIN US.



Funders & Partners:



THE GALLERY BY THE SEA



Lowestoft Lifeguard Station oil by Laina West

Open - Fri/Sat/Sun 11am - 4pm

27-29 All Saints Road | Pakefield | Lowestoft | Suffolk | NR33 0JL

www.feriniartgallery.co.uk 01502-562222



FERINI
ART
GALLERY

